

# SIGNATURE

## NORTH EAST

OFFICIALLY RATED THE NO.1 ESTATE AGENT IN THE NORTH EAST





📍 Duke Street, North Shields NE29 6EQ



# Duke Street, North Shields NE29 6EQ

**Asking Price**  
**£800,000**

Signature North East welcomes you to Brewery Bond, Duke Street, North Shields. This exceptional 4-bedroom, top-floor apartment spans two levels and boasts stunning views of the River Tyne. Situated in a vibrant and evolving area, this property boasts a perfect blend of urban convenience and natural beauty. Families will appreciate the proximity to reputable schools, while the neighbourhood itself is enriched with parks, green spaces, and opportunities for leisurely strolls along the Quayside. The nearby coastal attractions and beaches further enhance the vibrant lifestyle, while improved transport links, and road networks ensure easy accessibility for commuters and leisure seekers. The historic Fish Quay stands out as a lively destination, attracting both locals and visitors with its unique charm and character.

Located on the top floor, this breath-taking apartment spans two levels and offers unrestricted views of the River Tyne. Spanning two levels, it features an open-concept design with a seamless flow between spaces, blending modern and rustic charm with exposed brick, beams, and new flooring throughout. A skylight allows for natural light to flood the area. The kitchen features a peninsula counter for ample meal prep space, and sleek units provide convenient storage. This floor also includes two bedrooms, bedroom one, bedroom one features an en-suite, and the exposed brick and beams continue the apartment's distinctive character.

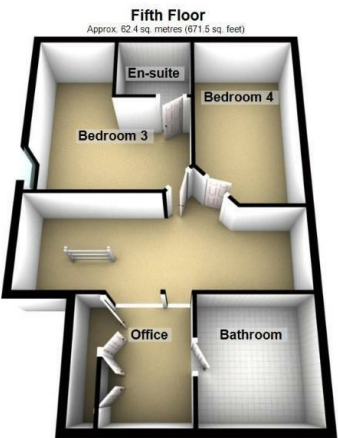
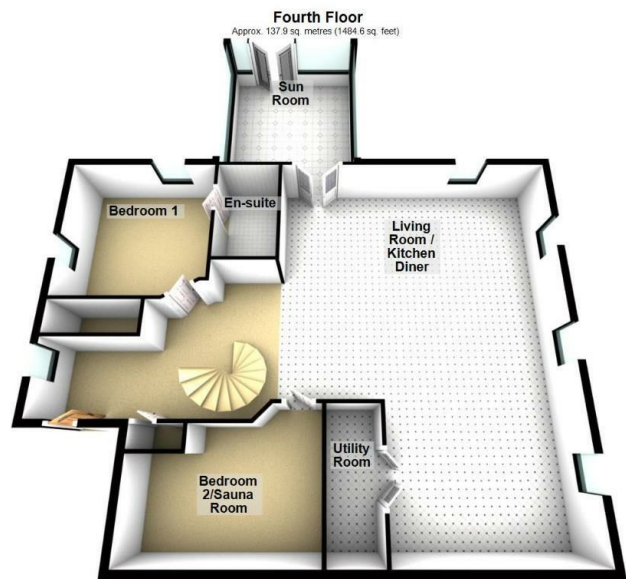
A spiral staircase leads to the mezzanine level off the main hallway, which features two additional bedrooms, one with an en-suite, along with a dedicated office space. The family bathroom offers a serene retreat with a jacuzzi tub, perfect for relaxation.

The standout feature is the rooftop sunroom/conservatory, offering panoramic river views, perfect sunsets, and a tranquil space for boat spotting. The adjoining roof terrace provides an outdoor seating area. For convenience, the property includes a garage with an automatic door and designated parking for two vehicles, without the need for a permit.



PLEASE NOTE THAT THE VENDOR HAS CERTIFIED THE PROPERTY INFORMATION AND IMAGES.

# PROPERTY FLOORPLAN



Total area: approx. 200.3 sq. metres (2156.1 sq. feet)  
Please be advised the floorplans are not drawn to scale and are to be used to give an idea of the layout of the property.  
Plan produced using PlanUp.

## Measurements:

Living Room / Kitchen Diner  
32'6" x 23'8"

Sun Room  
14'2" x 12'3"

Utility Room  
11'1" x 4'1"

Bedroom One  
12'9" x 12'7"

En Suite  
9'0" x 5'5"

Bedroom Two  
14'6" x 11'1"

Bedroom Three  
14'3" x 13'4"

En Suite  
6'5" x 5'5"

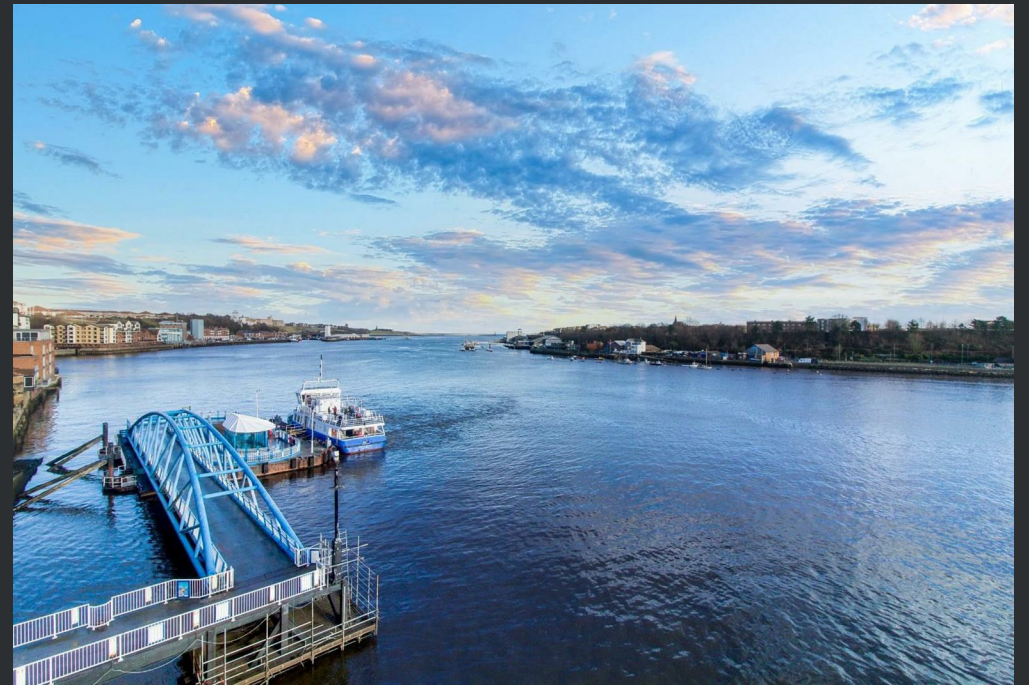
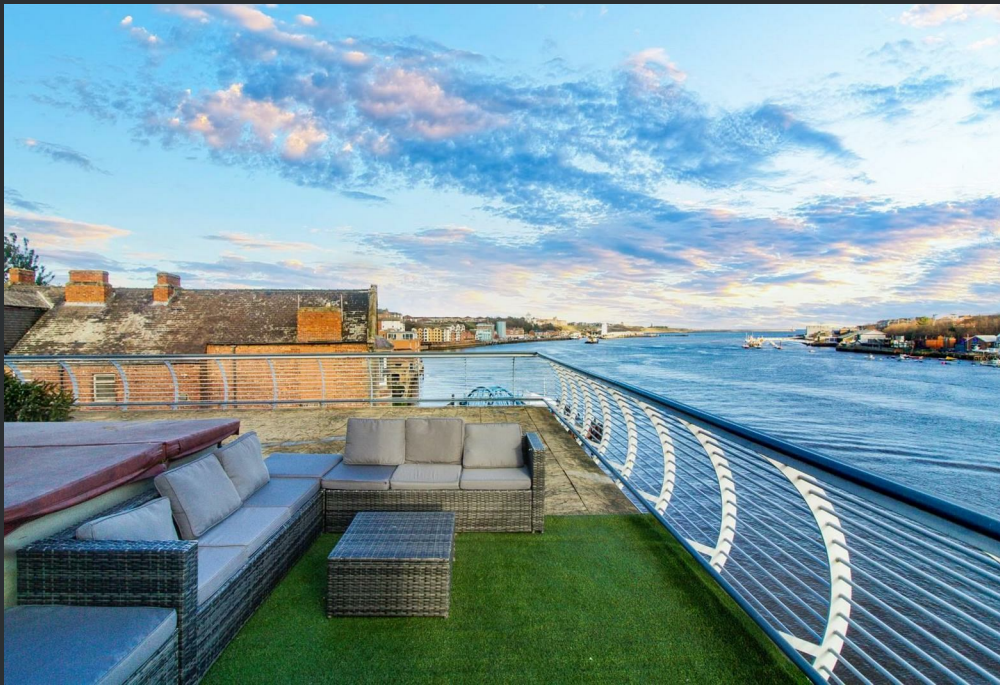
Bedroom Four  
15'7" x 8'7"

Bathroom  
9'1" x 8'11"

Office  
9'1" x 6'5"

Energy Efficiency Rating		
	Current	Potential
Very energy efficient - lower running costs		
(92 plus) A		
(81-91) B		
(69-80) C	77	77
(55-68) D		
(39-54) E		
(21-38) F		
(1-20) G		
Not energy efficient - higher running costs		
England & Wales		
EU Directive 2002/91/EC		









More 5 Star Customer Reviews than any other Agent based in the North East on [allAgents.co.uk](https://allAgents.co.uk)



**SALES**

**LETTINGS**

**FINANCE**

**LAW**

**WE COVER THE WHOLE OF THE NORTH EAST**

Whitley Bay  
0191 251 3344

Cramlington  
01670 897 213

Tynemouth  
0191 296 6689

Morpeth  
01670 513 966

Ponteland  
01661 820 082

Wallsend  
0191 432 4151

Alnwick  
01665 511 800

Heaton  
0191 432 4275

Forest Hall  
0191 266 9966

Other locations  
0191 640 3523

Newcastle  
0191 640 2284

Durham  
0191 303 8252

Gosforth  
0191 640 3523

Sunderland  
0191 543 6390

Whickham  
0191 432 5102

Gateshead  
0191 432 4294

Jesmond  
0191 281 1037

Killingworth  
0191 640 3602

Ryton  
0191 413 9845

Head Office &  
Lettings  
0191 253 4815

\*Highest recommended 5-star reviews than any other Estate Agent based in the North East on [allAgents.co.uk](https://allAgents.co.uk) - The UK's Largest Customer Review Website for the Property Industry & Awarded Best Estate Agency 2018 & 2019 - North East England by SME News